

CONXTD - Remote Set / Unset

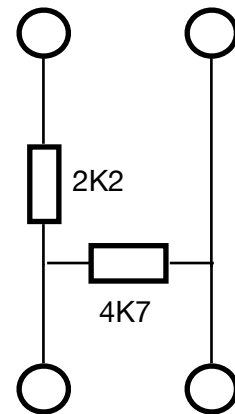
Wire WebWay output to Intruder Panel key switch to trigger Set/Unset of Intruder Panel.

Technical Specification

Manufacturer	Scantronic / Eaton
Model	Scantronic 9751/9752
Version	
Minimum SPT software	V2.00
Misc Profile	Pro / Mini: None Nano: Nano - Remote OP/CL
Panel Wiring	Closed Circuit Loop (CCL) or End of Line (EOL)
Technical Notes	Panel must be connected to SPT serially and be signalling either SIA format or Hardwire Pins for alarm reporting.

Cable Connection and Resistor Values

Pro/Mini WebWay	Panel	Nano WebWay	Panel
3A	Tamper	1a	Tamper
3B	Alarm	1b	Alarm



Panel Programming via Keypad

Enter Engineer mode.

1. Key in Zone number
2. Set (12) Keyswitched - Latched.
3. Go into Zone configuration (21).
4. Set value to 0 for Closed Circuit Loop or 1 for Fully Supervised Loop.~
5. Go to (44) to set Final Exit Delay timer.
6. Then (39) to enter Exit Mode and set value to 0 (timed).

CONXTD

Add to new CONXTD site

Select to enable set / unset feature when registering a site to CONXTD within Connections.

Add to existing CONXTD site

Submit a request using the 'Help' button in CONXTD Manager within Connections.